

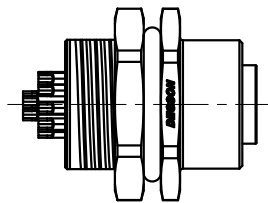
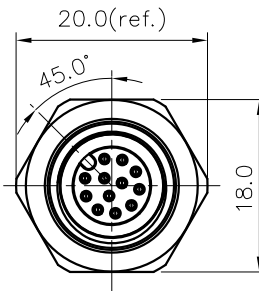
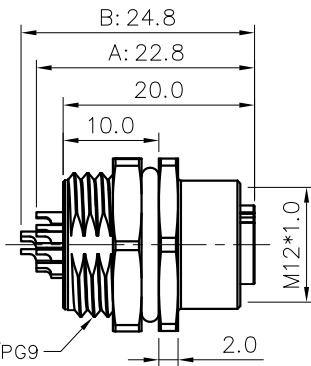
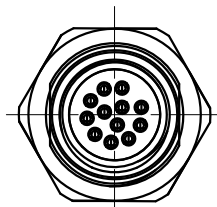
REVISION RECORD

| REV | ECN | DESCRIPTION | DRFT | DATE |
|-----|-----|-------------|------|------|
|-----|-----|-------------|------|------|

NOTES:

- Rated voltage/current : 3pin A: 250V / 4A  
4pin A: 250V / 4A  
5pin A: 60V / 4A  
6pin A: 30V / 2A  
8pin A: 30V / 2A  
10pin A: 30V / 1.5A  
12pin A: 30V / 1.5A  
5pin B: 60V / 4A  
4pin D: 250V / 4A
- Withstanding voltage : 3,4pin A: AC1500V/1Min  
5pin A: AC1120V/1Min  
6,8,10,12pin A: AC500V/1Min  
5pin B: AC1120V/1Min  
4pin D: AC1500V/1Min
- Levels of protection: IP68
- Wire range :  
3pin A: 24~22AWG/0.25~0.34mm<sup>2</sup>  
4pin A: 24~22AWG/0.25~0.34mm<sup>2</sup>  
5pin A: 24~22AWG/0.25~0.34mm<sup>2</sup>  
6pin A: 26~24AWG/0.14~0.25mm<sup>2</sup>  
8pin A: 26~24AWG/0.14~0.25mm<sup>2</sup>  
10pin A: 26~28AWG/0.14~0.08mm<sup>2</sup>  
12pin A: 26~28AWG/0.14~0.08mm<sup>2</sup>  
5pin B: 24~22AWG/0.25~0.34mm<sup>2</sup>  
4pin D: 24~22AWG/0.25~0.34mm<sup>2</sup>

- Wire connection mode: soldering
- Operating temperature: -40°C~+105°C
- For Panel Thickness Max: 4.5mm
- RoHS Compliance
- Tolerance : ±0.5mm



SD-M12X-XXP-FF-SH800X-00A(H)

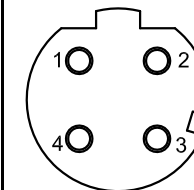
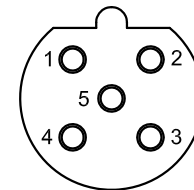
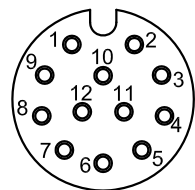
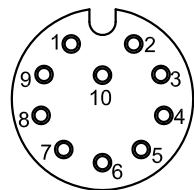
Coding: A,B,D

Thread specification:  
001: PG9  
002: M16\*1.5

Pin number: 03,04,05,  
06,08,10,12

|                   |                   |   |
|-------------------|-------------------|---|
| 5pin B Coding     | A                 |   |
| 4pin D Coding     | A                 |   |
| 10,12pin A Coding | A                 | B |
| 3~8pin A Coding   | A                 |   |
| Description       | General dimension |   |

|                |                |               |               |
|----------------|----------------|---------------|---------------|
| 10pin A Coding | 12pin A Coding | 5pin B Coding | 4pin D Coding |
|----------------|----------------|---------------|---------------|



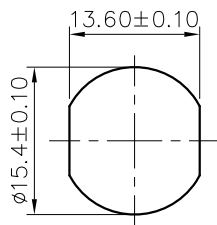
Pin Assignments Front View

Pin Assignments Front View

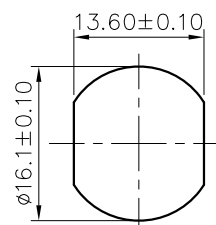
Pin Assignments Front View

Pin Assignments Front View

Thread specification: PG9  
Thread specification: M16\*1.5

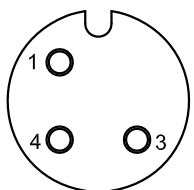


Panel Mounted

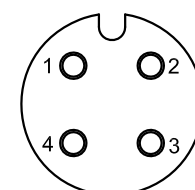


Panel Mounted

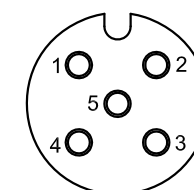
|               |               |               |               |               |
|---------------|---------------|---------------|---------------|---------------|
| 3pin A Coding | 4pin A Coding | 5pin A Coding | 6pin A Coding | 8pin A Coding |
|---------------|---------------|---------------|---------------|---------------|



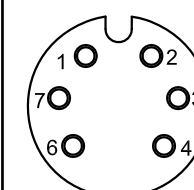
Pin Assignments Front View



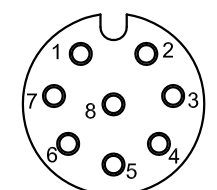
Pin Assignments Front View



Pin Assignments Front View



Pin Assignments Front View



Pin Assignments Front View

|                        |                                    |  |            |            |
|------------------------|------------------------------------|--|------------|------------|
| DETACHED LISTS         | PART NO.:<br>SDM12XXXPFSSH800X00AH | 宁波高松电子有限公司<br>NINGBO DEGSON ELECTRICAL CO., LTD      |            |            |
|                        | APPD:                              | NAME:<br>SD-M12X-XXP-FF-SH800X-00A(H)                |            |            |
|                        | CHKD:                              | TITLE: CUSTOMER DRAWING                              |            |            |
|                        | DRFT: SQ 2019.05.17                | REV: D0-1  | SHEET: 1/1 | SCALE: 1:1 |
| THIRD ANGLE PROJECTION |                                    | DRAWING NO.: XXXXXXXX-XX-CXX<br>DO NOT SCALE DRAWING |            |            |