

PCB LAYOUT THICKNESS=1.6mm

NOTES:

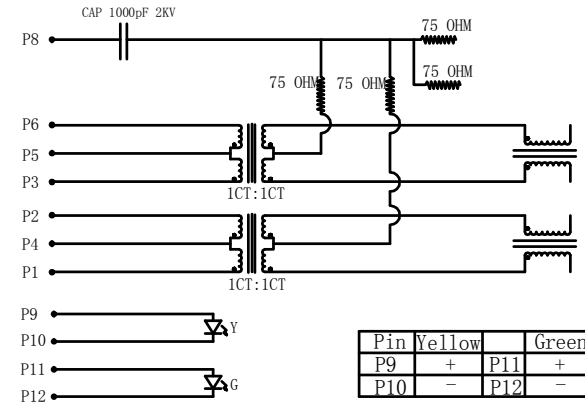
1. ELECTRICAL CHARACTERISTICS:
 - 1.1 CONTACT RESISTANCE: 30mΩ Max.
 - 1.2 DIELECTRIC WITHSTANDING VOLTAGE: 1000V AC(ms) FOR 1 MINUTE.
 - 1.3 INSULATION RESISTANCE: 1000MΩ Min.
 - 1.4 VOLTAGE RATING:125V.
 - 1.5 CURRENT RATING:1.5A.
 - 1.6 VOLTAGE(LED):2.4V MAX.

2. ENVIRONMENT CHARACTERISTICS:
 - 2.1 TEMPERATURE: -0°C~+70°C.

4. PRODUCT NUMBER CODE:

DG1134 -09 -X X X X

- Housing Materials
N:Nylon
- Contact Plating
S:Selective 6u" Gold
- Housing Color
B:Black
- No.Of Contacts
8:8p8c
- Connector Type
S:Socket



Pin	Yellow	Green	
P9	+	P11	+
P10	-	P12	-

CIRCUIT SCHEMATIC

GENERAL TOLERANCE			MATERIAL:	SURFACE/COLOR:
X.	±0.60		MAT NO./REV:	/ 00
X	±0.38	APPD: 兰春华	2023.08.14	
XX	±0.25	CHKD: 陈招	2023.08.14	
		DRFT: 唐本恒	2023.08.11	
		NAME		
		DG1134-09-XXXXX		
00	REV	ECN	DESCRIPTION	唐本恒
				2023.08.11
				DRFT: 唐本恒
				2023.08.11
				DRAWING NO.
				200035055
				TYPE
				CUSTOMER DRAWING
				DRAWING STATUS
				已发布
				SCALE
				1:1
				SHEET
				1/1

Transfer or duplication of this document as well as the utilization or communication of its contents are prohibited unless explicit authorization is granted. Violations will be liable for compensation. All rights reserved for patent, utility model or design registrations. 未经授权，禁止复制或传播本文件内容。未经许可，不得复制或传播本文件内容。本公司保留所有权利。侵权必究。