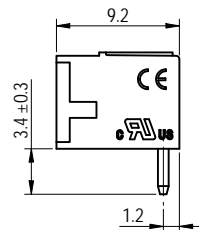
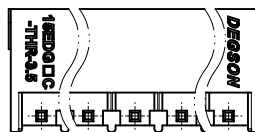
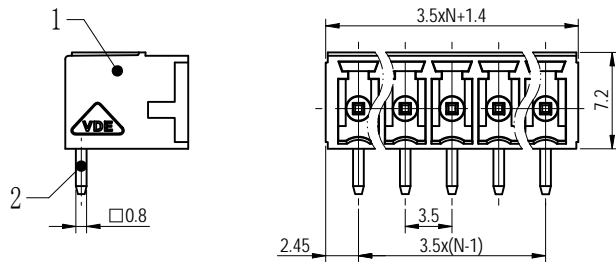
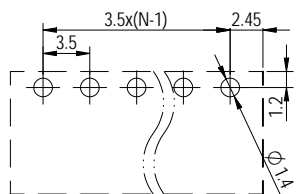
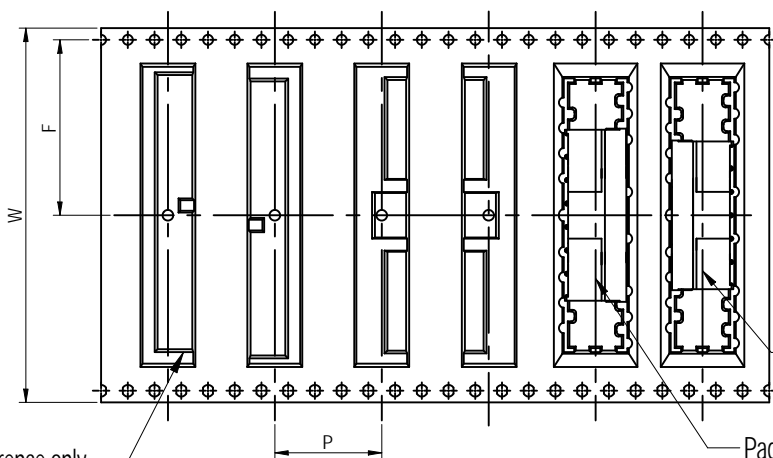
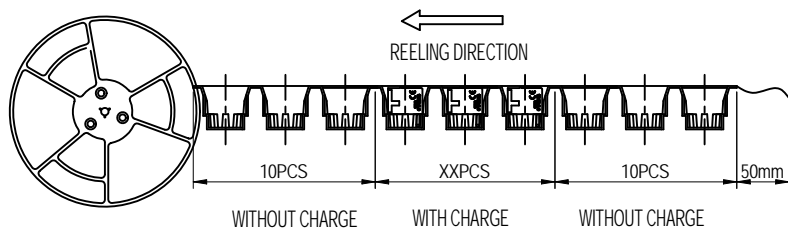
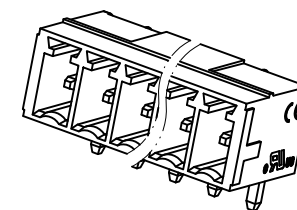


PCB LAYOUT
Scale 2.5:1



公差/General tolerances (mm)											D 0.1/10			
0	>3	>6	>10	>18	>30	>50	>80	>120	>180	>250		>315	>400	>500
±0.12	±0.18	±0.22	±0.26	±0.31	±0.37	±0.57	±0.80	±0.93	±1.05	±1.15	±1.60	±2.20	±2.50	±2

Scale 2.5:1



The reel drawing just reference only

Reel Name	POLE	Width /W	Pitch /P	Width /F	Width/ BO	Qty. per reel	Reel qty. per carton	Qty. per carton
15EDGRM-THR-3.81-SINGLE POLE REEL(32)	3	32mm	12mm	14.25mm	18.41mm	470	8	3760
15EDGRM-THR-3.81-DOUBLE POLE REEL(32)	2,4	32mm	12mm	14.25mm	18.41mm	470	8	3760
15EDGRM-THR-3.81-SINGLE POLE REEL(56)	5,7,9,11	56mm	12mm	26.25mm	40.20mm	470	5	2350
15EDGRM-THR-3.81-DOUBLE POLE REEL(56)	6,8,10	56mm	12mm	26.25mm	40.20mm	470	5	2350
15EDGRM-THR-3.81-REEL(72)	12	72mm	16mm	34.25mm	52.90mm	380	3	1140

Note:
The A&Z(H) in the name means: A(H) and Z(H).

ITEM	NAME OF PART	MATERIAL	NOTES
2	Pin	Copper	Sn Plated
1	Housing	Thermoplastic	UL94V-0

UL 标准/UL Standard:	B	C	D
额定电压/电压/Rated Voltage(V)/Current(A)	300/8	/	/
IEC 标准/IEC Standard:			
过压类别/Overvoltage Category/污染等级/Pollution Degree	III/3	II/2	II/2
额定电压/电压/Rated Voltage(V)/Current(A)	/	/	250/8
额定脉冲电压(KV)/Rate Impulse Voltage(KV)	/	/	2.5
间距/Pitch(mm)/线数范围/Poles	3.5/N=02-12P		
使用温度范围/Operating temperature(°C)	-40~+130		
符合RoHS环保要求/Conform to RoHS	Yes		

DIGSON MATERIAL: SURFACE/COLOR: MAT NO./REV: - / 00 MAT STATUS: 批量

APPD: 兰春华 2022.12.06 NAME: 15EDGRM-THR-3.5-XXP-1Y-00A&Z(H)
 CHKD: 黄耀志 2022.12.06
 DRFT: 朱岳鹏 2022.12.06

DRAWING NO.	TYPE	DRAWING STATUS	SCALE	SHEET
200020125	CUSTOMER DRAWING	已发布	1:1	1/1

REV	ECN	DESCRIPTION	DRFT	DATE
00			朱岳鹏	2022.12.06